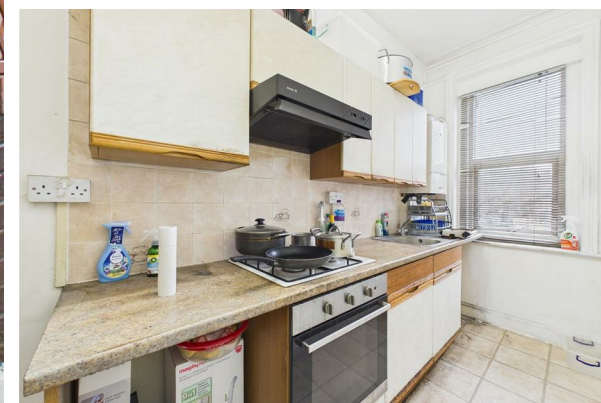




TO LET

Craven Park, London, NW10

£295,000



- Close to Public Transport & Shops
- Share of Freehold
- First Floor
- Edwardian Conversion

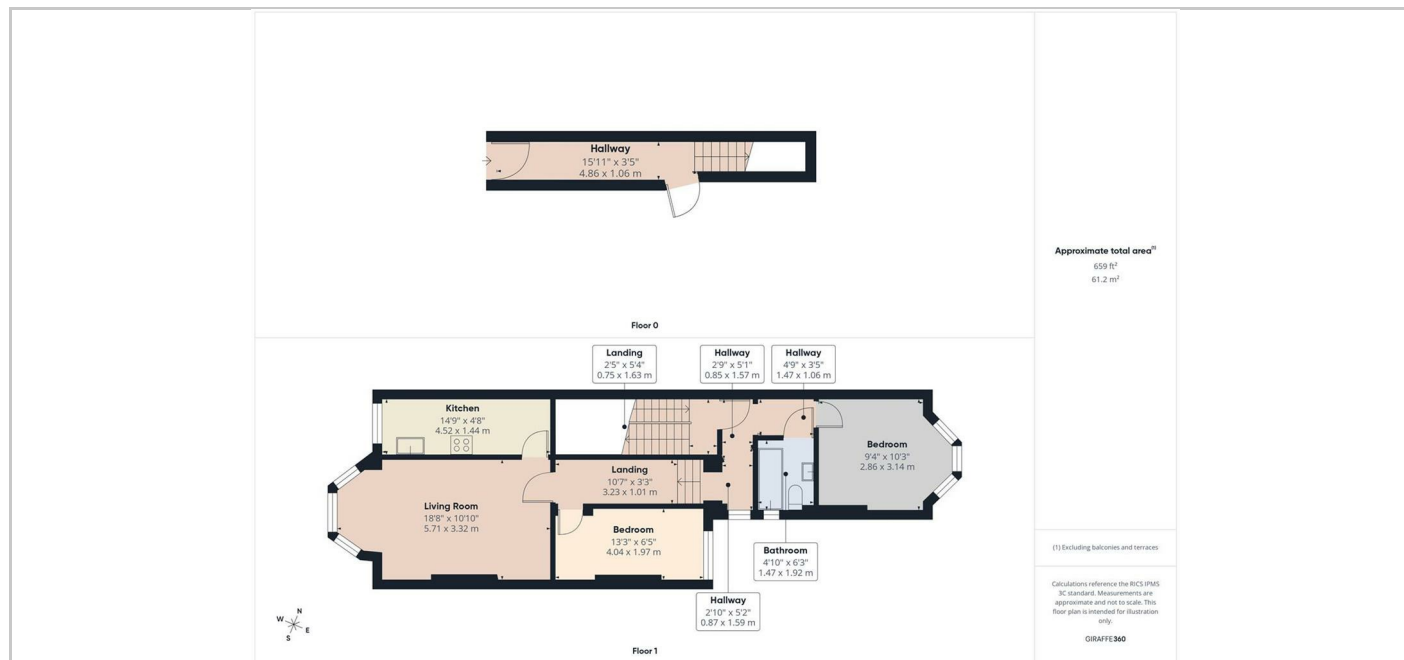
THE PROPERTY

Set on the first floor of an Edwardian building, this two bedroom conversion offers well balanced accommodation with generous proportions and a clear, traditional plan. The apartment retains a sense of solidity and character, with high ceilings and large windows bringing light deep into the interior.

The plan is arranged around a central hallway that leads through to a spacious living room positioned at the front of the building. This room benefits from a broad bay window and provides ample space for both seating and dining. The separate kitchen sits to the rear and is neatly arranged, offering good storage and worktop space, with scope for updating to suit personal taste.

Both bedrooms are comfortable doubles, quietly positioned and well proportioned. The principal bedroom sits to the front, while the second bedroom works equally well as a guest room or study. A bathroom is set off the hallway, completing the internal arrangement.

Craven Park is well placed for everyday convenience, with Harlesden station within easy reach and a wide range of local shops, cafés and amenities close by. The share of freehold adds a sense of long term security and control, making this a compelling option for both owner occupiers and investors.



SITUATION

Directions

The Old Fire Station 90 High Street, Harrow-on-the-Hill, Middlesex, HA1 3LP
Tel: 020 8864 8844 Email: info@woodward.co.uk <https://www.woodward.co.uk>